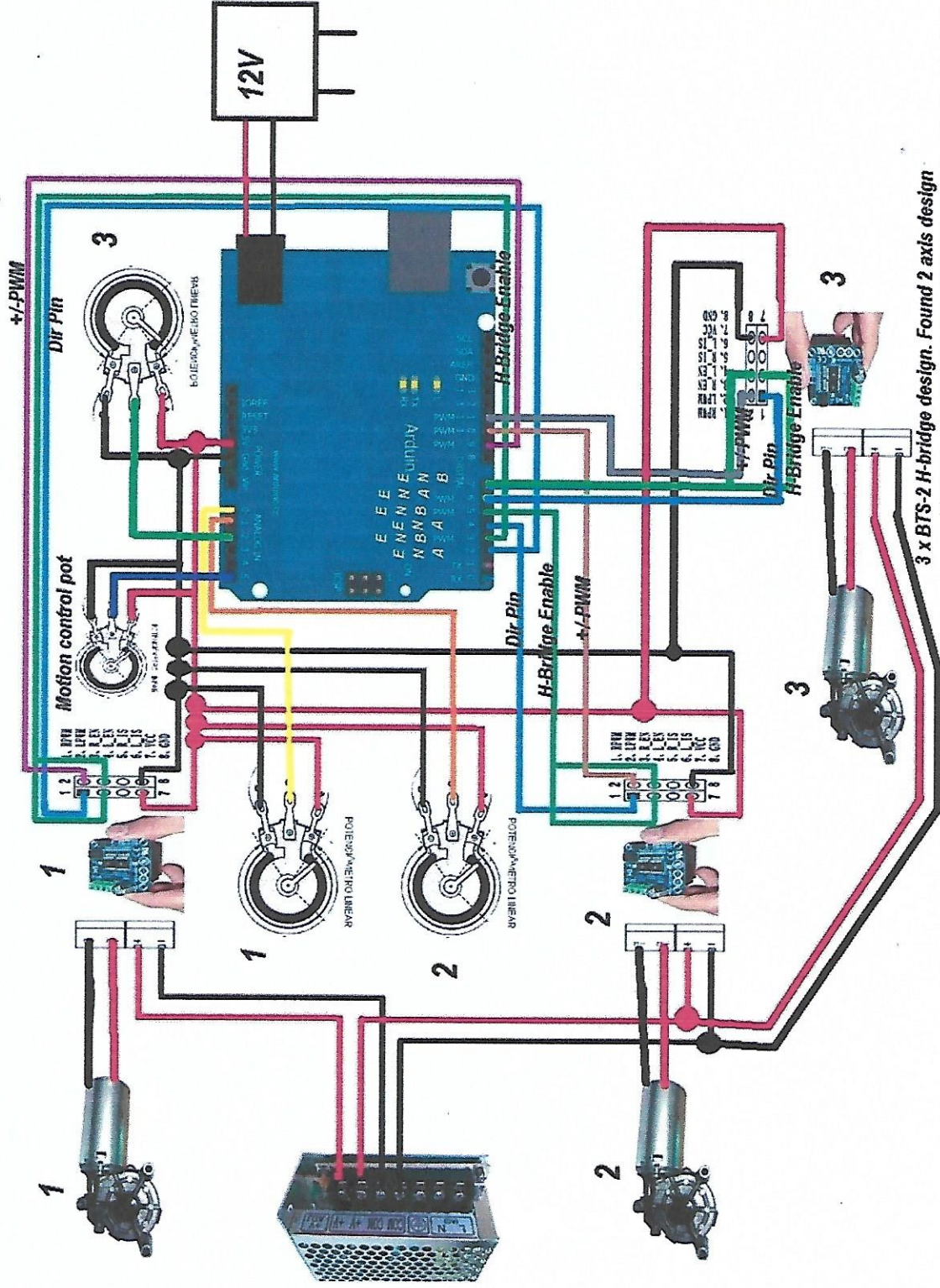


3 Axis Mode 2 SMC3 v0.7. Arduino uno

Warning! NOT TESTED!

Add 2 pot in the wiring map a H-bridge and 1 motor. I do not studie electrics. Mybe some can check the wiremap?



3 x BTS-2 H-bridge design. Found 2 axis design
White smc3 v0.7 software. Thats support 3 axis. So i readed
the code and added motor en pot 3 _motion pot to it.

This I want to use in my simulator.