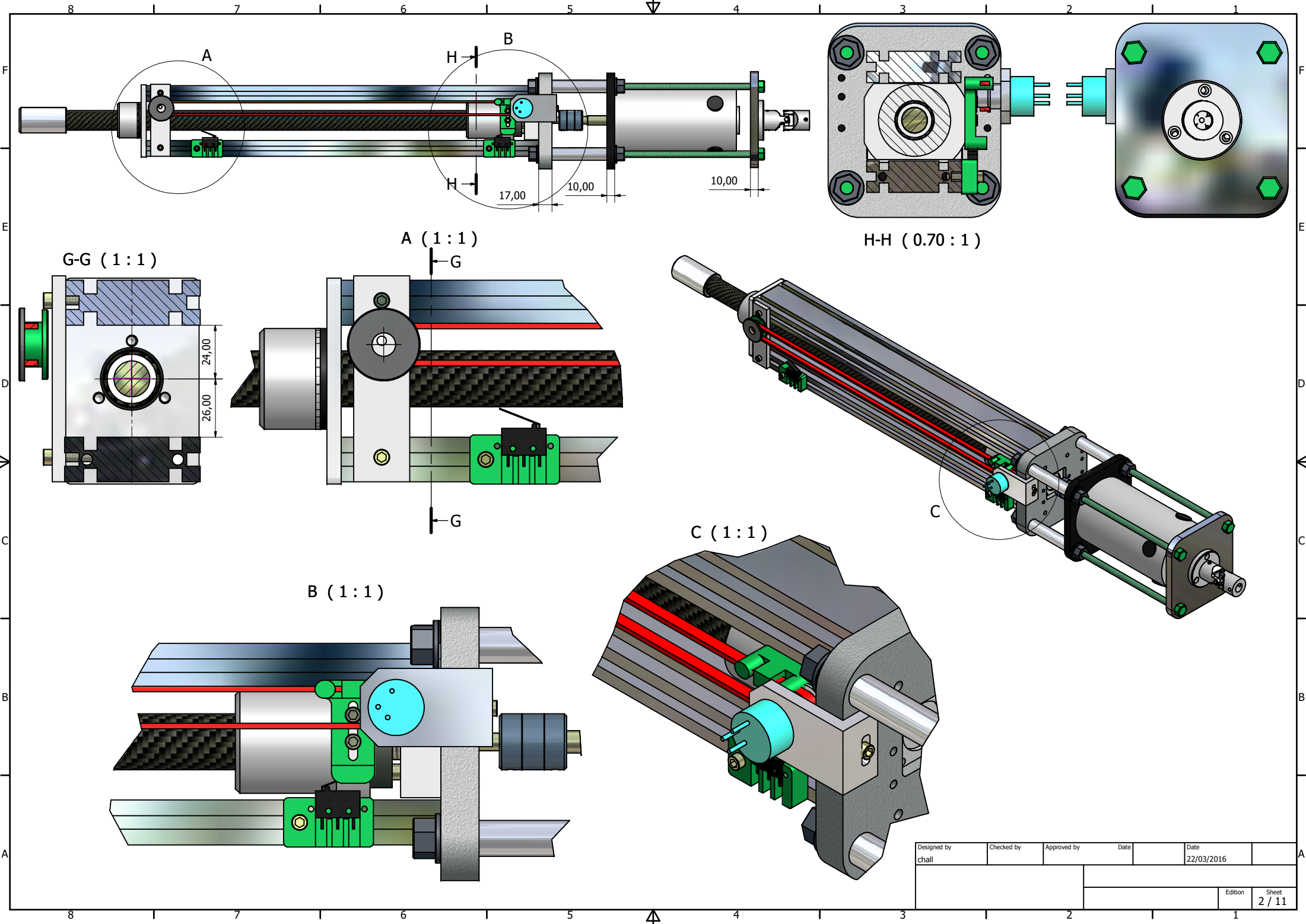


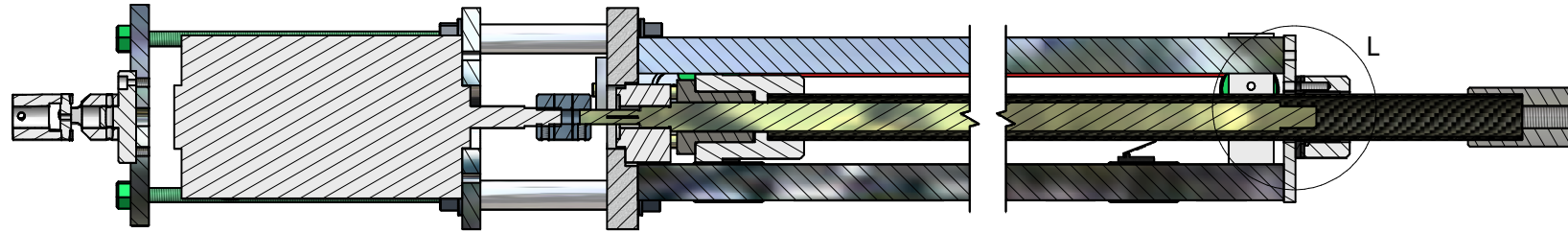
Parts List			
ITEM	QTY	PART NUMBER	ESTIMATED COST
1	1	Openbuild rail 20 x 60	
2	1	Openbuild 20x60 end plate	
3	1	Openbuild 20x 60 end plate top	
4	1	openbuilds 1605 x 500 ballscrew	
5	1	openbuilds 1605 ballscrew nut	
6	1	Openbuild 1605 BK12 bearing block	
8	1	MultiTurn Rotary Potentiometer	
9	1	Openbuild PM90L motor Base plate	
10	1	Openbuild pm90l motor top plate	
11	1	Openbuild actuator rod x 500mm	
12	1	Openbuilds Carbon Pole ballscrew nut Mount	
13	1	Openbuild pot mount LHS	
14	1	Openbuild belt GT2.5 x 40t	
15	2	Adjustable Switch Mount	
16	1	Belt tensioner - anchor fitting	
17	10	M4 Screw x 20	
18	1	Idler pulley set	
19	2	Openbuild microswitch	
20	1	Pot Mount V2	
21	1	M4 Screw x 10	
22	1	GT2 Belt	
23	1	PM90I PARVALUX MOTOR	
24	4	m8 x 150 stud-nut PM90L Motor Version	
25	5	Openbuild M10 nut_washer combo	
26	3	Openbuild M10 nut_washer combo_MIR	
27	1	8mm Flexi coupler	
28	4	Openbuild 20 x 85 Motor mount spacer	
29	1	Openbuild U Joint Mount Base	
30	2	Openbuild UJ base	
31	1	Openbuild UJ base gimble	
32	1	14mm Ball Joint Mounting spigot	
33	1	Igus bearing insert carrier Retainer Plate	
34	1	Igus bearing insert carrier	
35	1	IGUS LINEAR LHS XUM-02-25	

Designed by chall	Checked by	Approved by	Date 22/03/2016	Date	
			Edition		Sheet 1 / 11

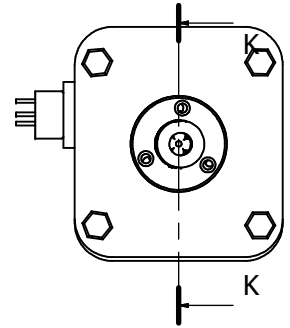


Designed by chall	Checked by	Approved by	Date 22/03/2016	Date
			Edition	Sheet 2 / 11

K-K (1 : 2)



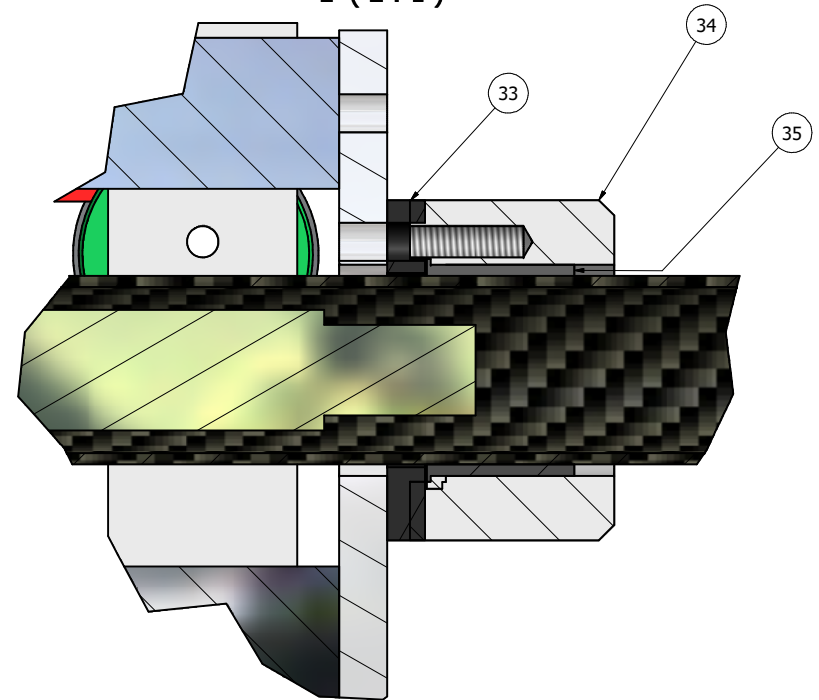
(1 : 2)



Parts List

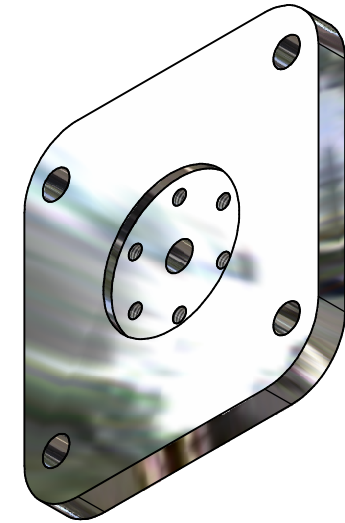
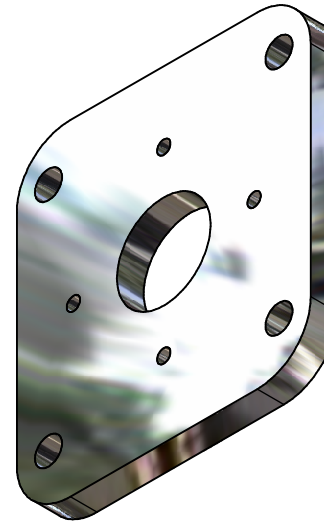
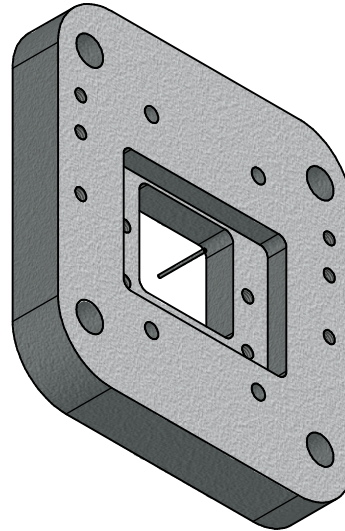
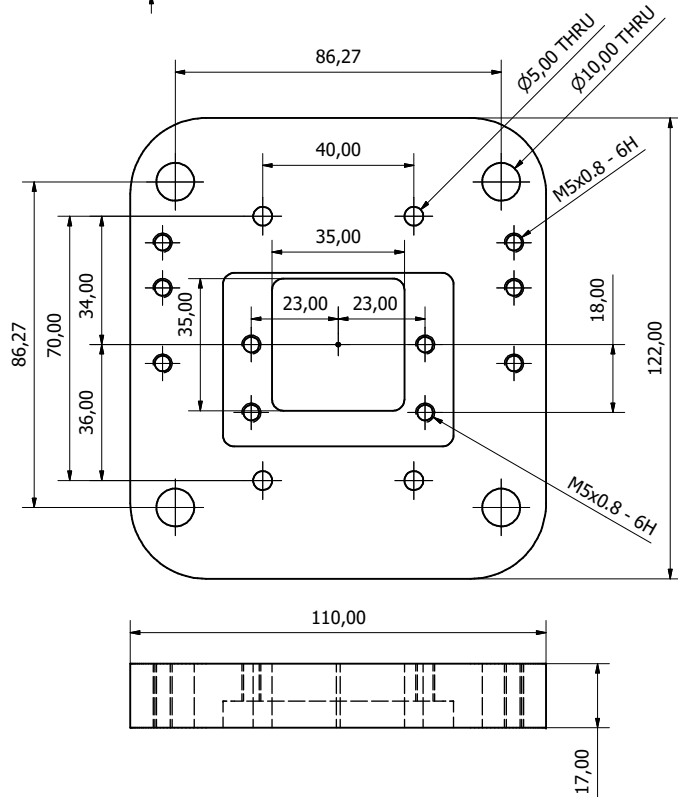
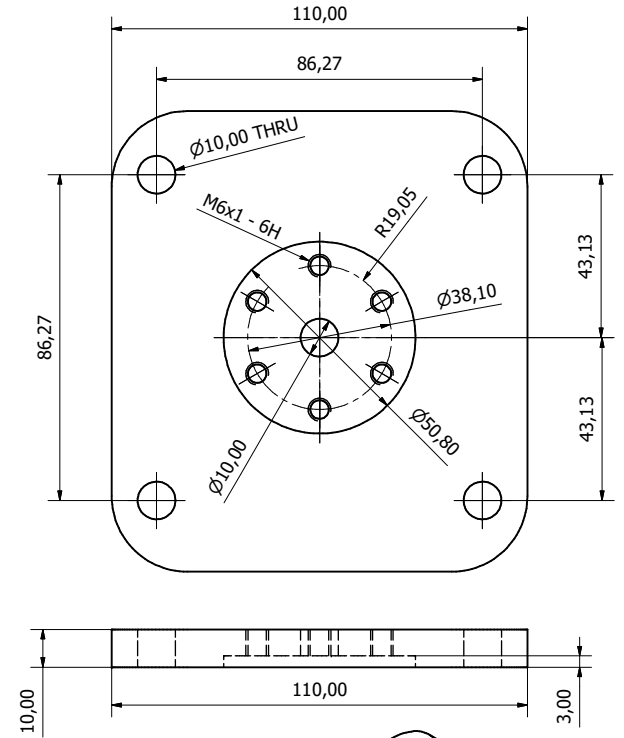
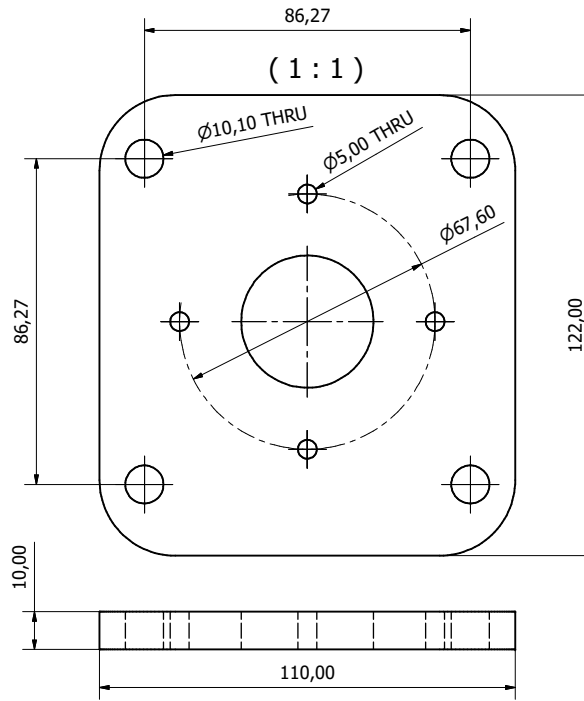
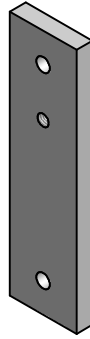
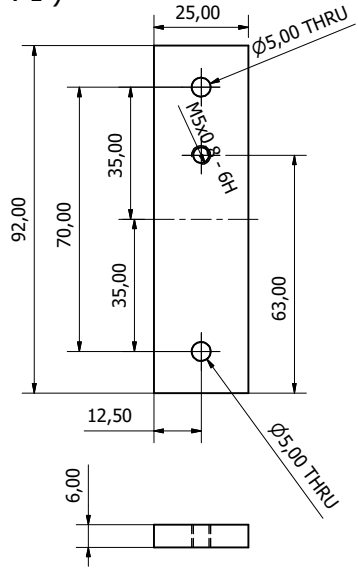
ITEM	QTY	PART NUMBER
1	1	Openbuild rail 20 x 60
2	1	Openbuild 20x60 end plate
3	1	Openbuild 20x 60 end plate top
4	1	openbuilds 1605 x 500 ballscrew
5	1	openbuilds 1605 ballscrew nut
6	1	Openbuild 1605 BK12 bearing block
8	1	MultiTurn Rotary Potentiometer
9	1	Openbuild PM90L motor Base plate
10	1	Openbuild pm90l motor top plate
11	1	Openbuild actuator rod x 500mm
12	1	Openbuilds Carbon Pole ballscrew nut Mount
13	1	Openbuild pot mount LHS
14	1	Openbuild belt GT2.5 x 40t
15	2	Adjustable Switch Mount
16	1	Belt tensioner - anchor fitting
17	10	M4 Screw x 20
18	1	Idler pully set
19	2	Openbuild microswitch
20	1	Pot Mount V2
21	1	M4 Screw x 10
22	1	GT2 Belt
23	1	PM90l PARVALUX MOTOR
24	4	m8 x 150 stud-nut PM90L Motor Version
25	5	Openbuild M10 nut_washer combo
26	3	Openbuild M10 nut_washer combo_MIR
27	1	8mm Flexi coupler
28	4	Openbuild 20 x 85 Motor mount spacer
29	1	Openbuild U Joint Mount Base
30	2	Openbuild UJ base
31	1	Openbuild UJ base gimble
32	1	14mm Ball Joint Mounting spigot
33	1	Igus bearing insert carrier Retainer Plate
34	1	Igus bearing insert carrier
35	1	IGUS LINEAR LHS XUM-02-25

L (2 : 1)

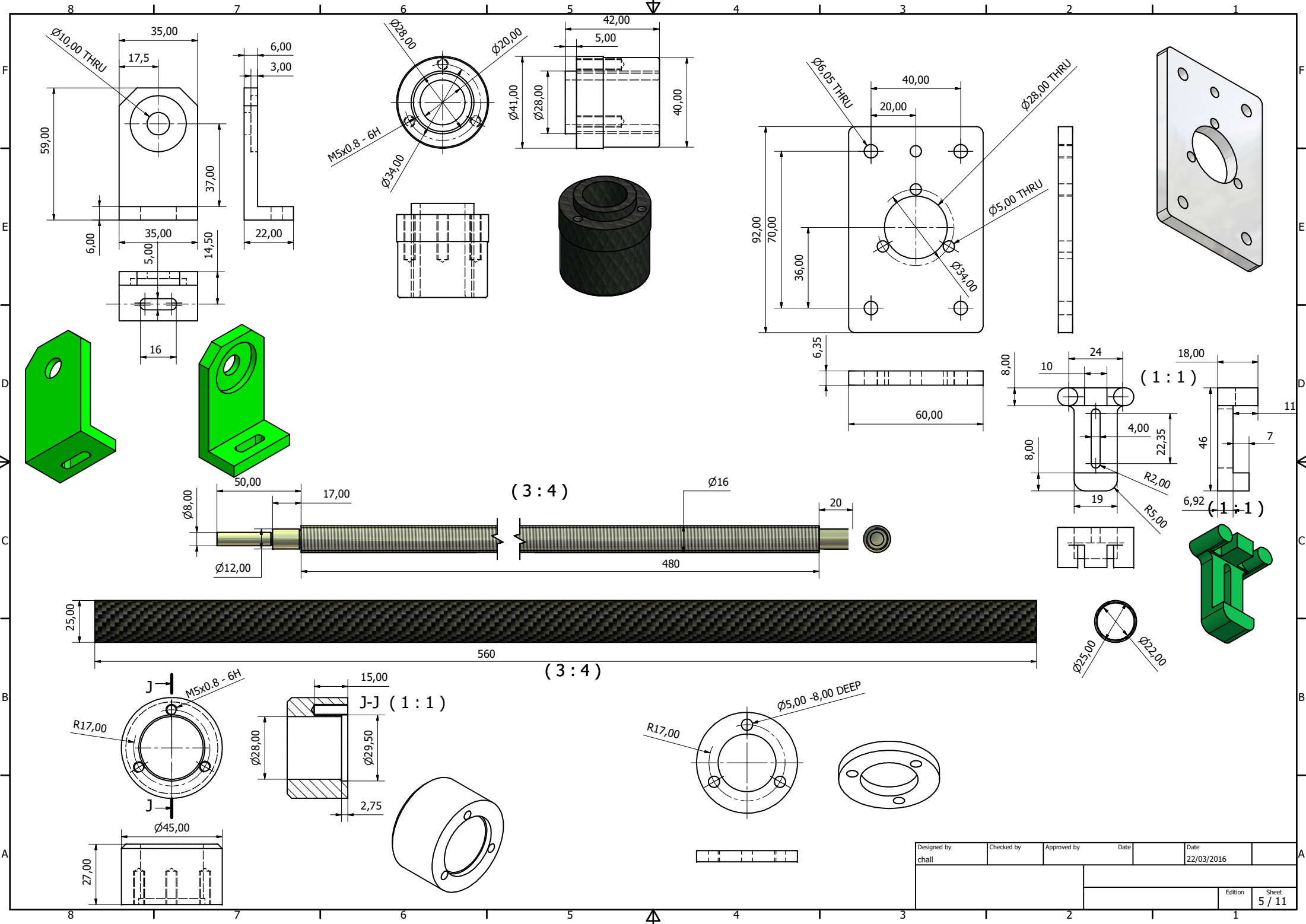


Designed by chall	Checked by	Approved by	Date 22/03/2016	Date
			Edition	Sheet 3 / 11

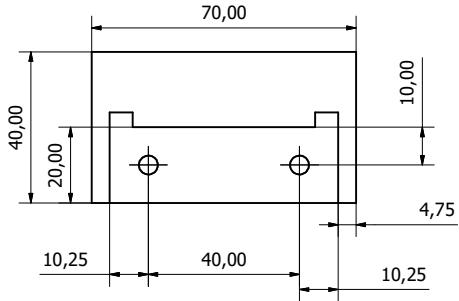
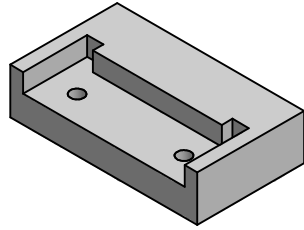
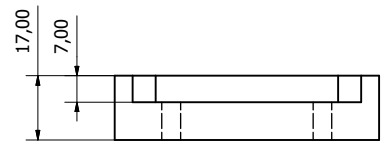
(1:1)



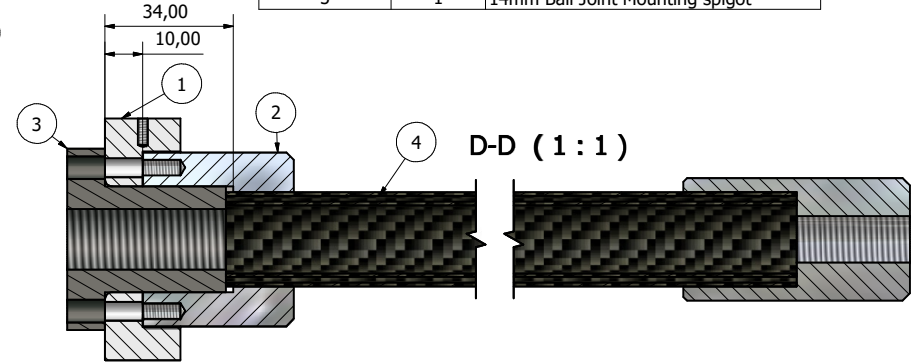
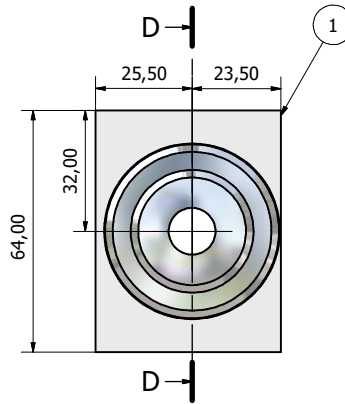
Designed by chall	Checked by	Approved by	Date 22/03/2016	Date	Sheet 4 / 11



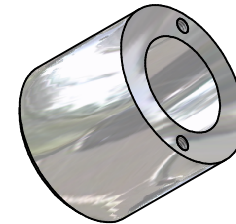
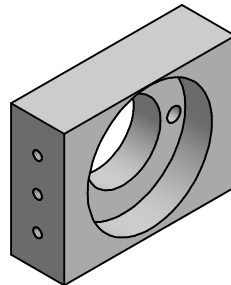
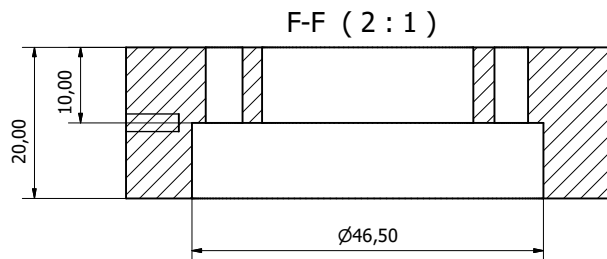
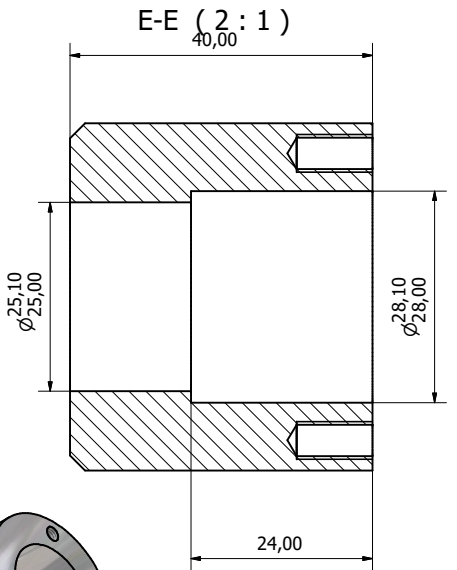
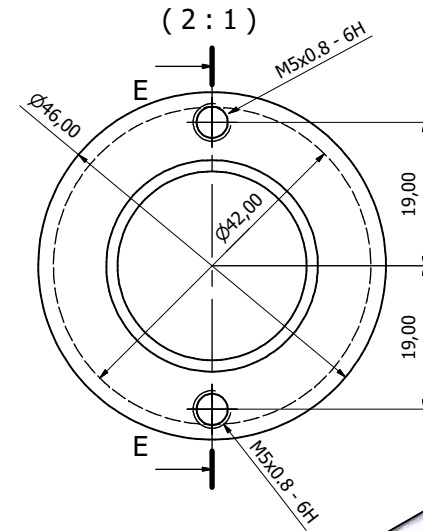
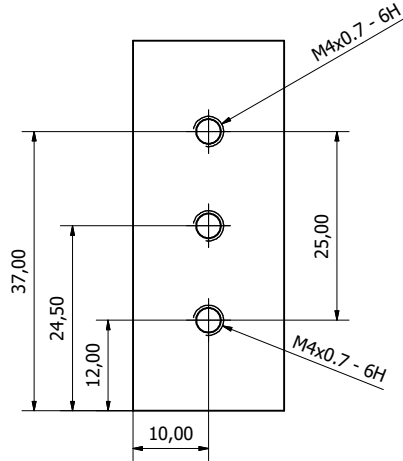
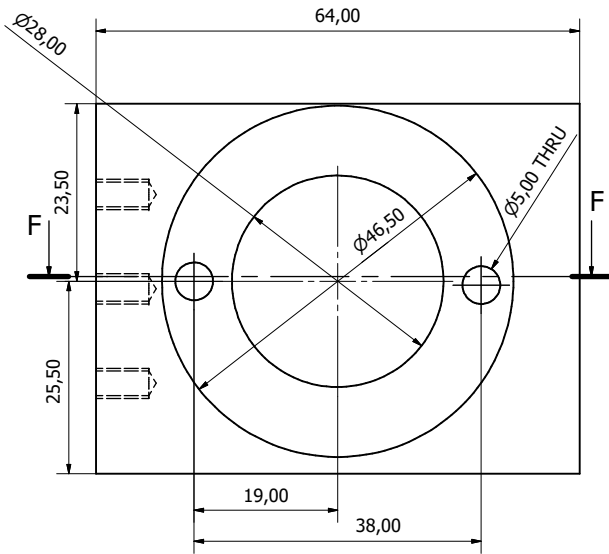
Designed by chall	Checked by	Approved by	Date 22/03/2016	Date 22/03/2016	Sheet 5 / 11



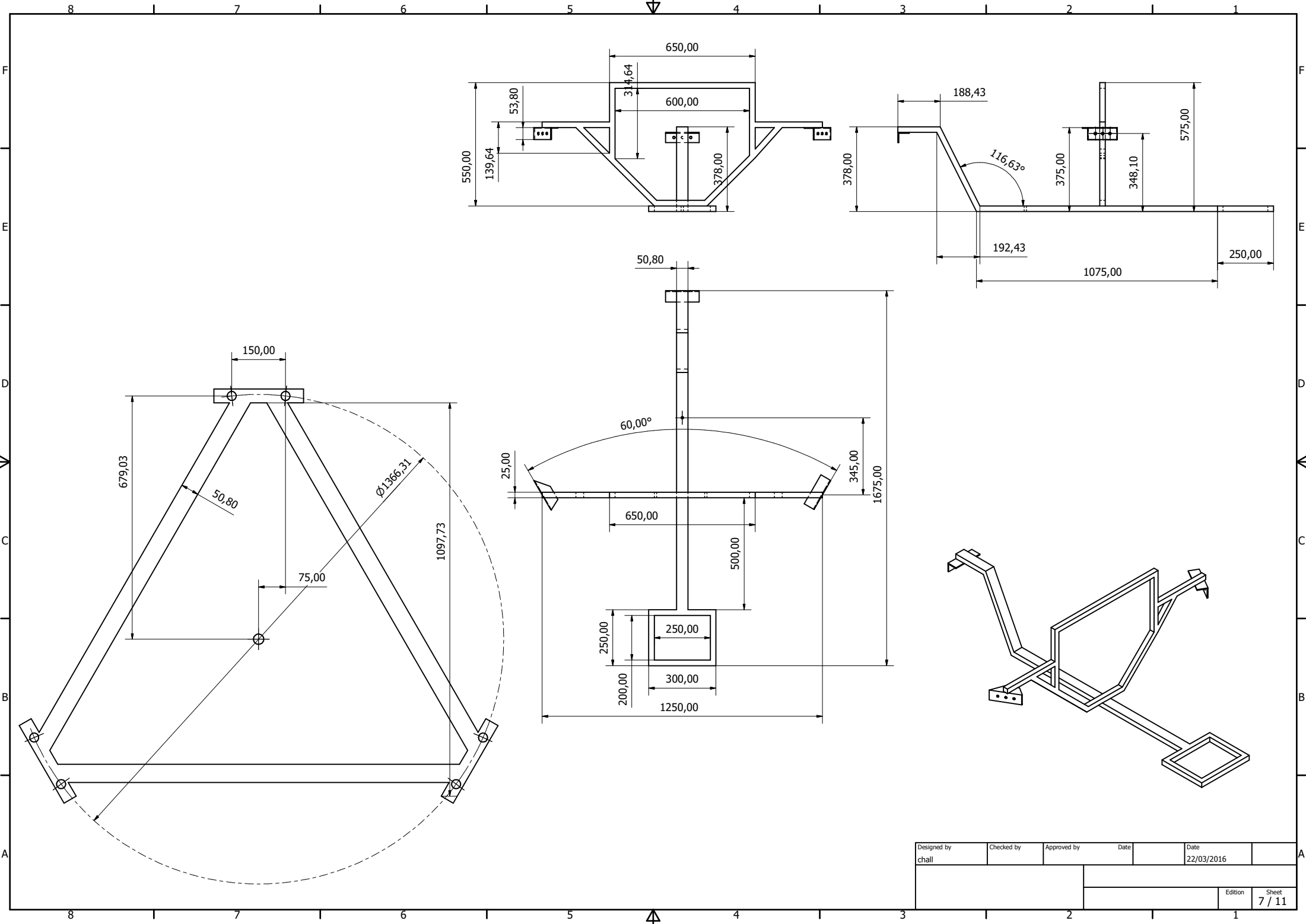
(2 : 1)



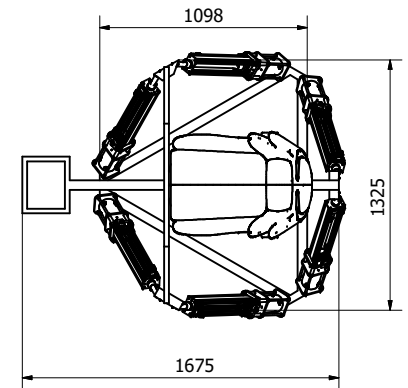
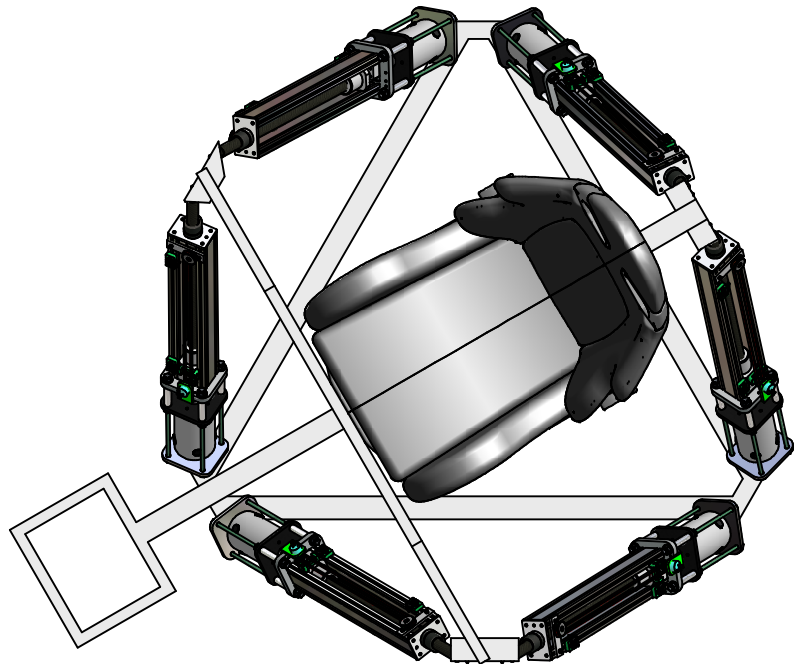
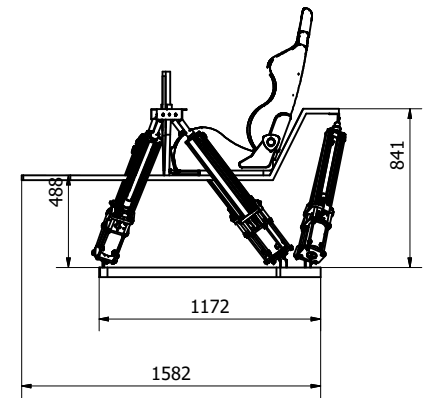
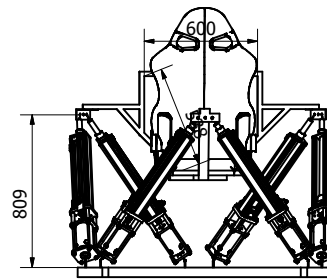
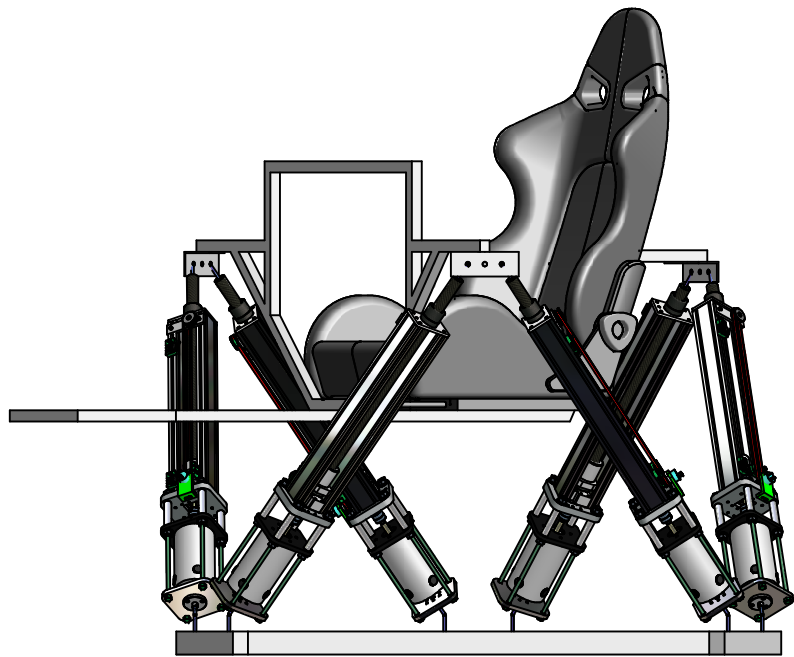
Parts List		
ITEM	QTY	PART NUMBER
1	1	Openbuilds Alt Nut -rod mount PT A
2	1	Openbuilds Alt Nut -rod mount PT B
3	1	openbuilds 1605 ballscrew nut
4	1	Openbuild actuator rod 25 x 200mm
5	1	14mm Ball Joint Mounting spigot



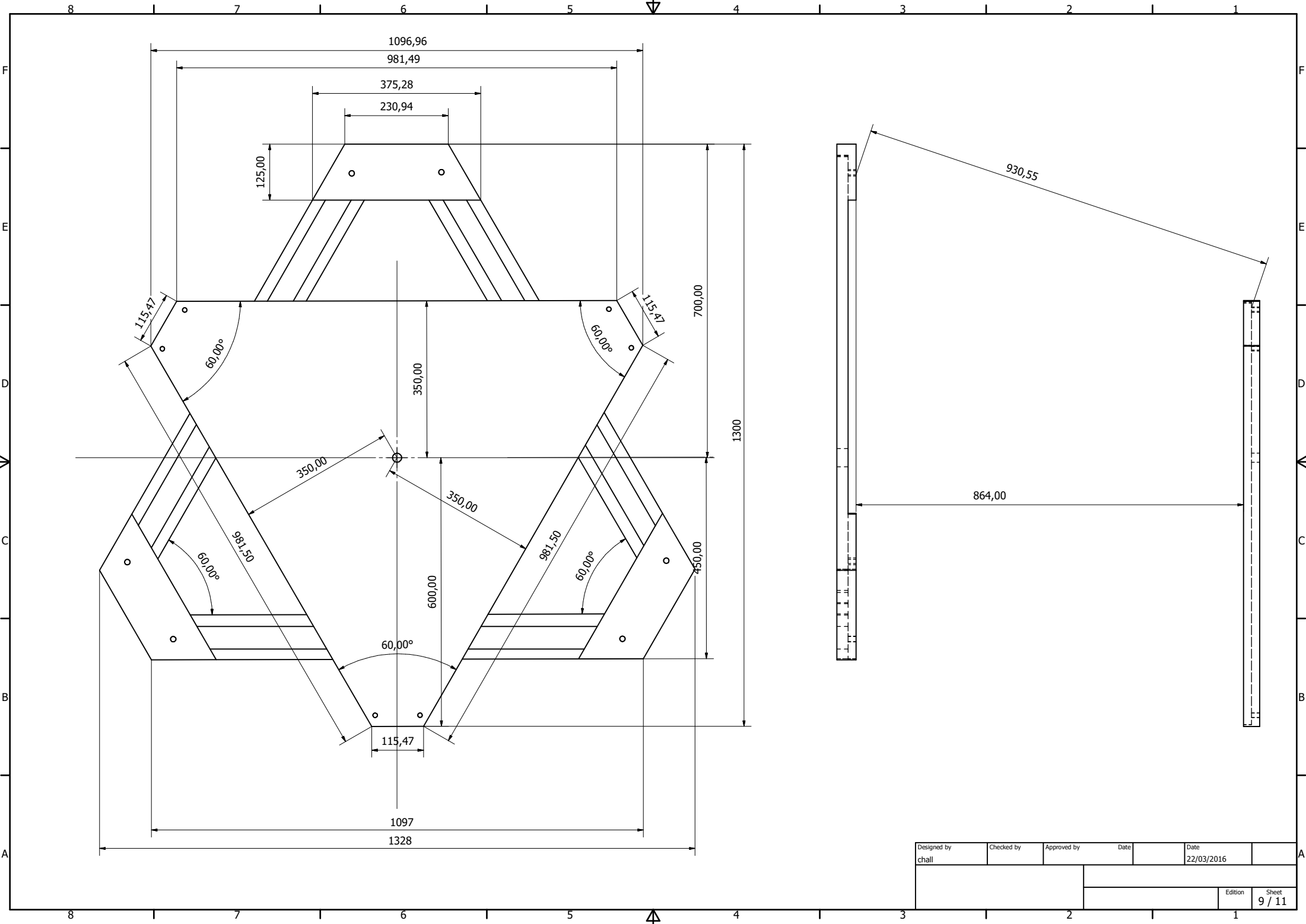
Designed by chall	Checked by	Approved by	Date 22/03/2016	Date	Sheet 6 / 11
				Edition	



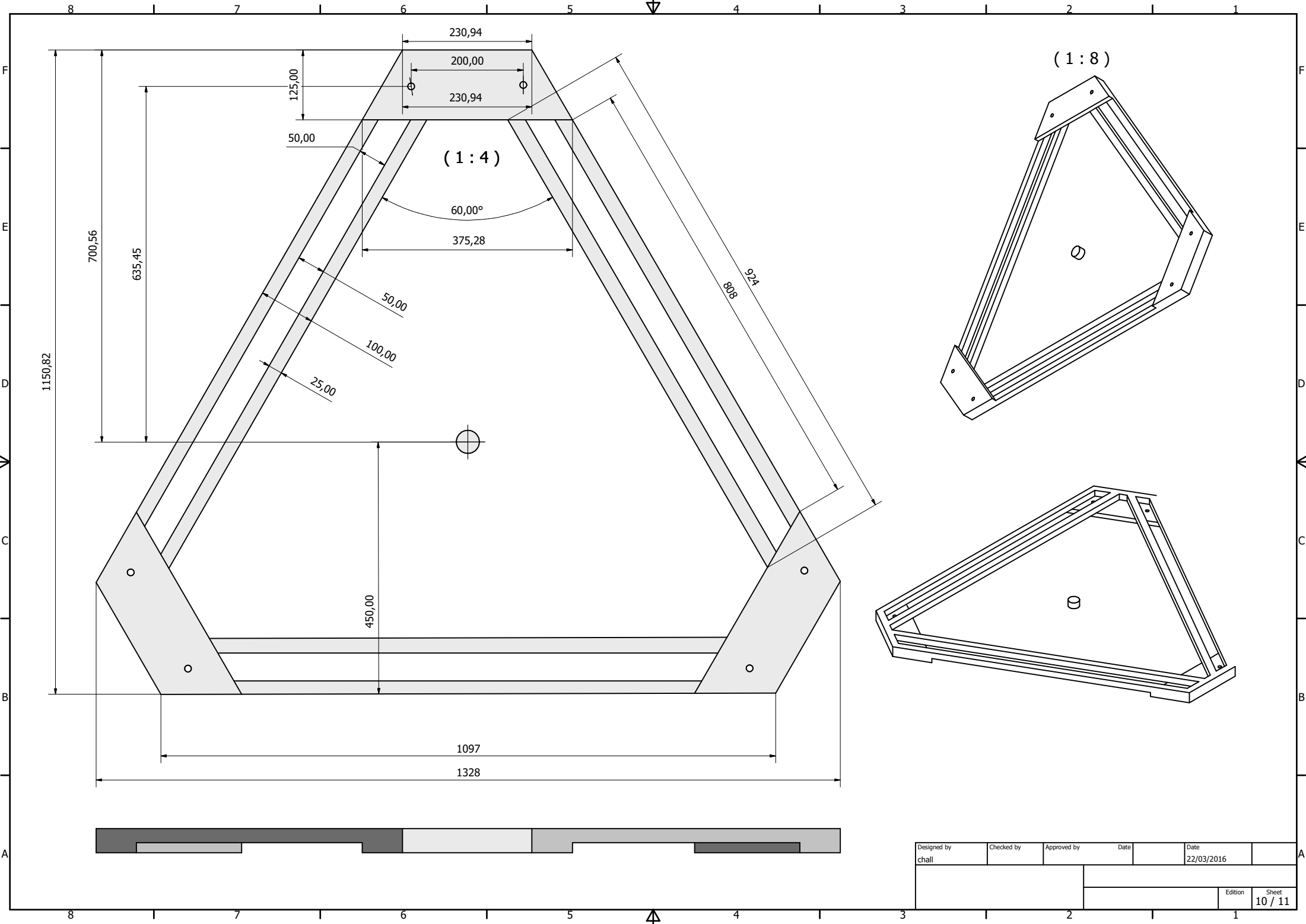
Designed by chall	Checked by	Approved by	Date 22/03/2016	
		Edition		
		Sheet 7 / 11		



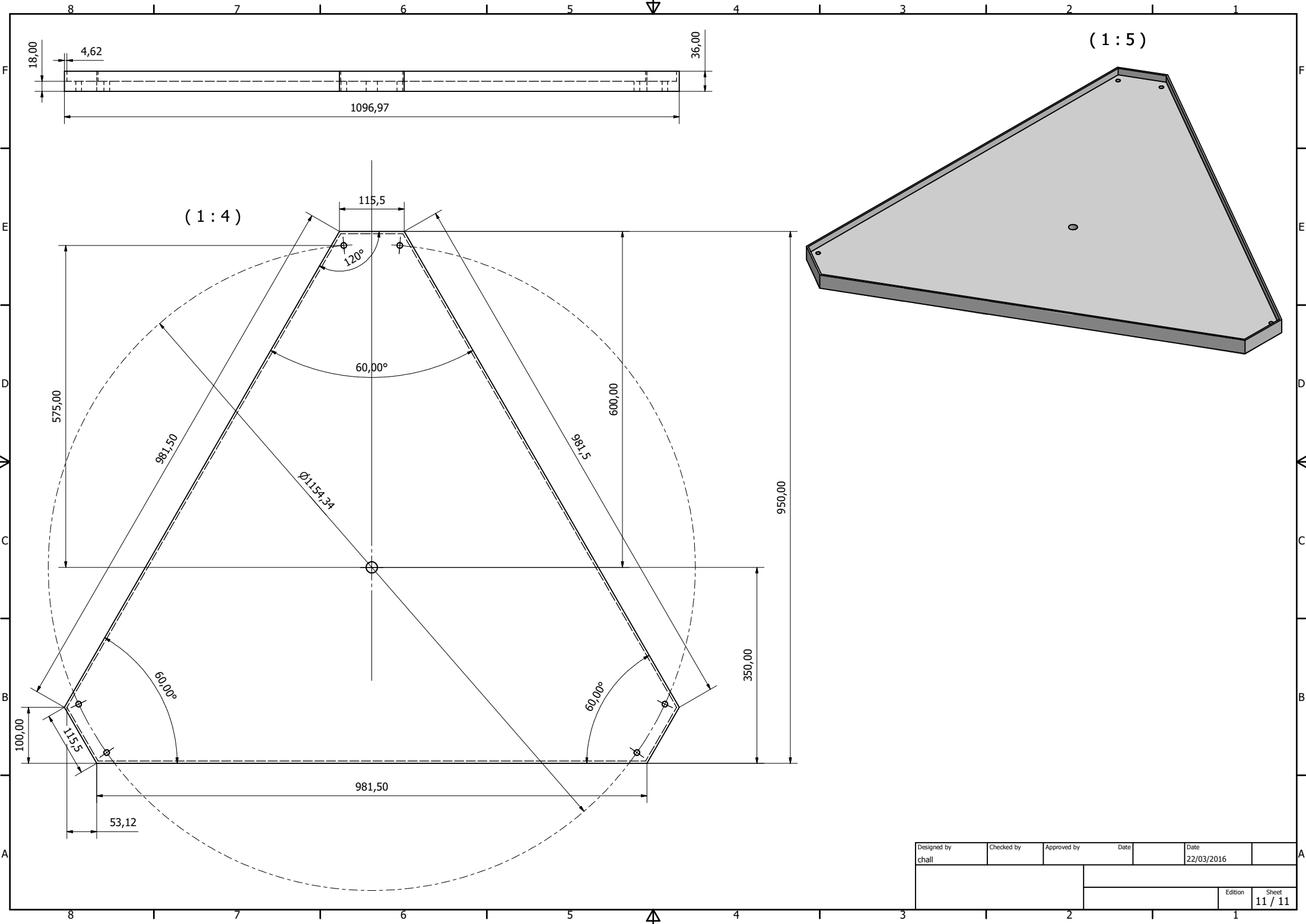
Designed by chall	Checked by	Approved by	Date 22/03/2016	Date
			Edition 8 / 11	



Designed by chall	Checked by	Approved by	Date 22/03/2016	Date
			Edition	
			Sheet 9 / 11	



Designed by chall	Checked by	Approved by	Date 22/03/2016	Date 22/03/2016
			Edition	Sheet 10 / 11



Designed by chall	Checked by	Approved by	Date 22/03/2016	Date
		Edition		Sheet 11 / 11